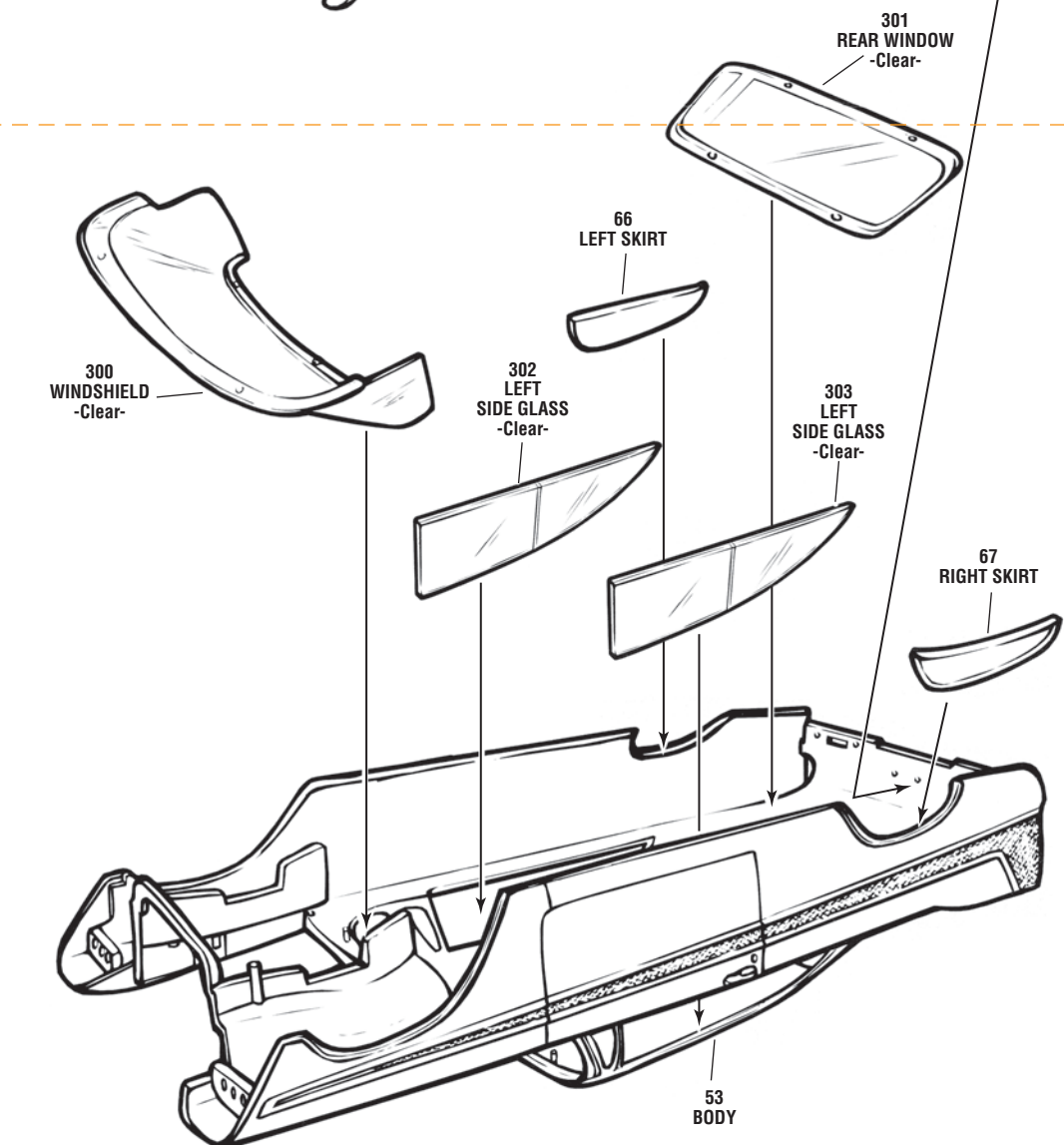
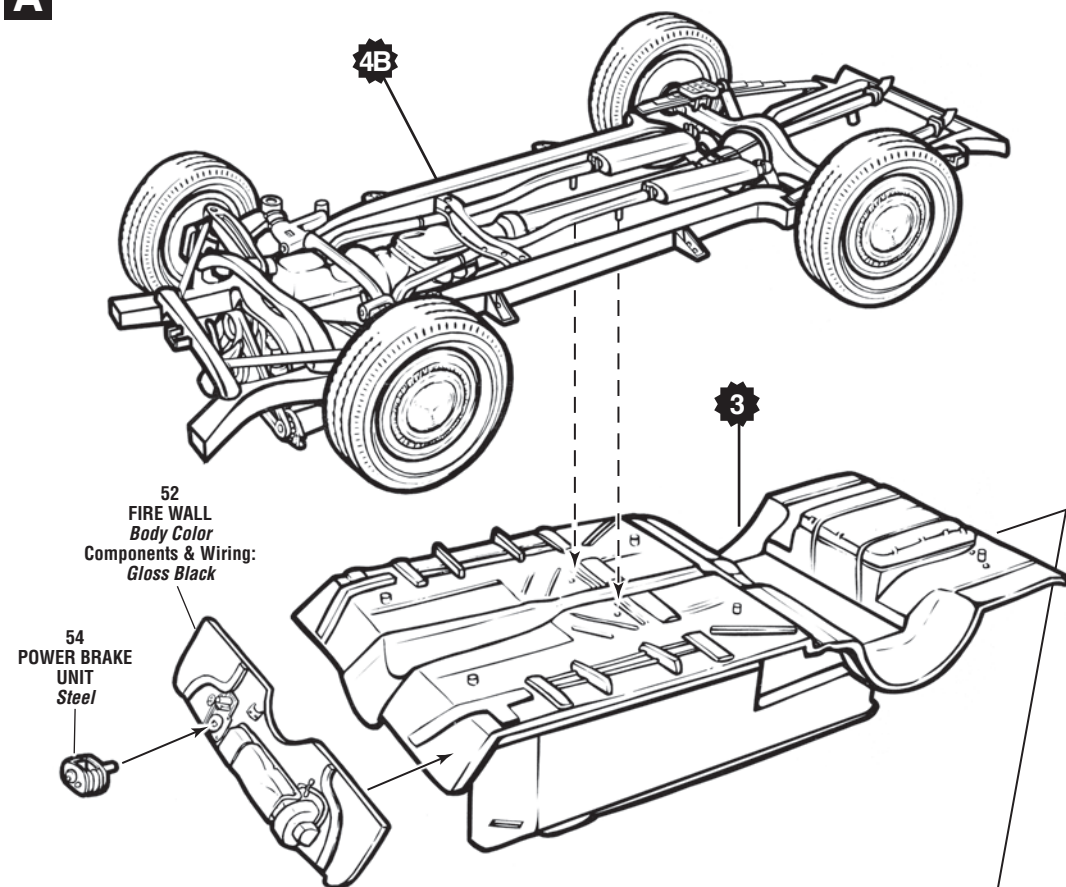


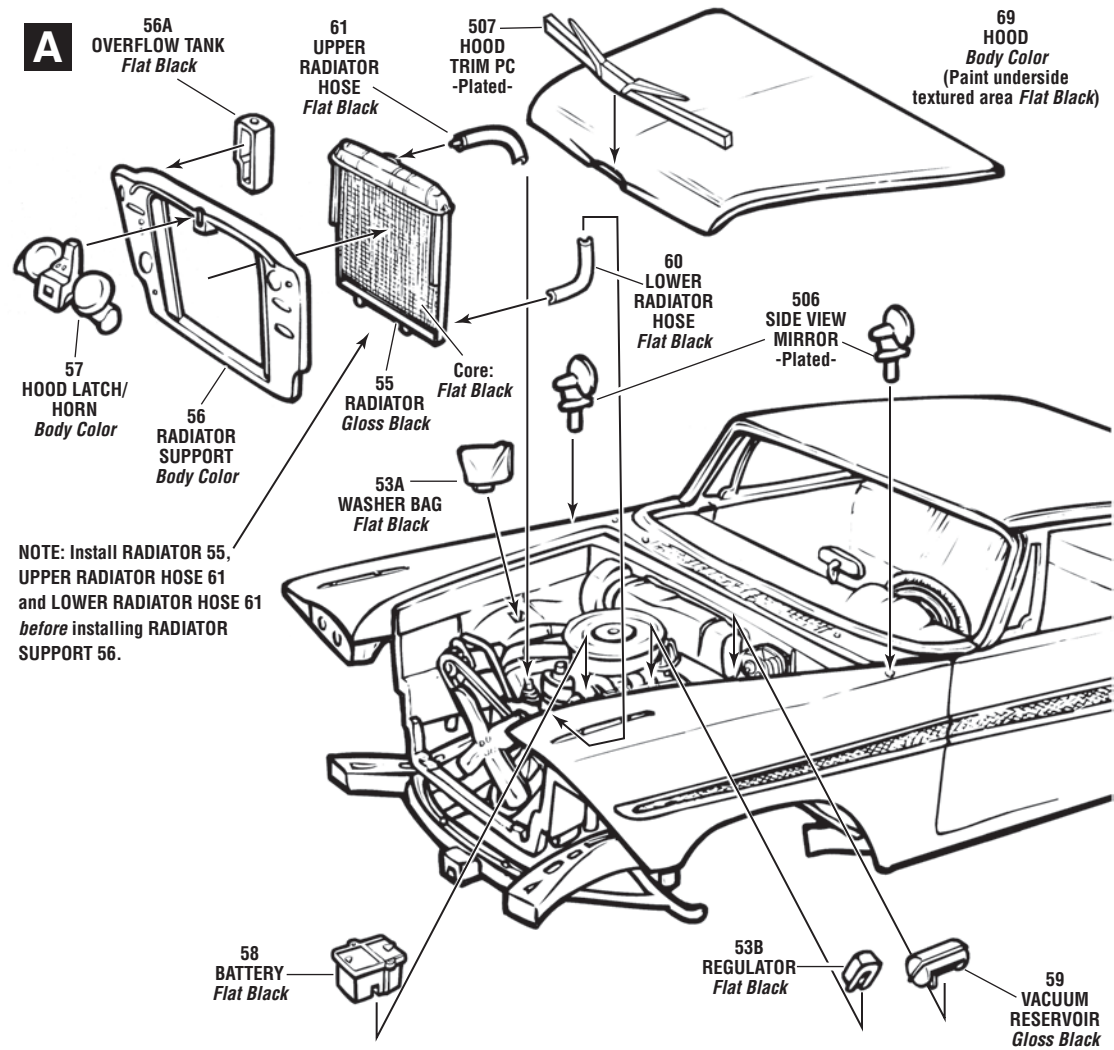
5 BODY ASSEMBLY

A

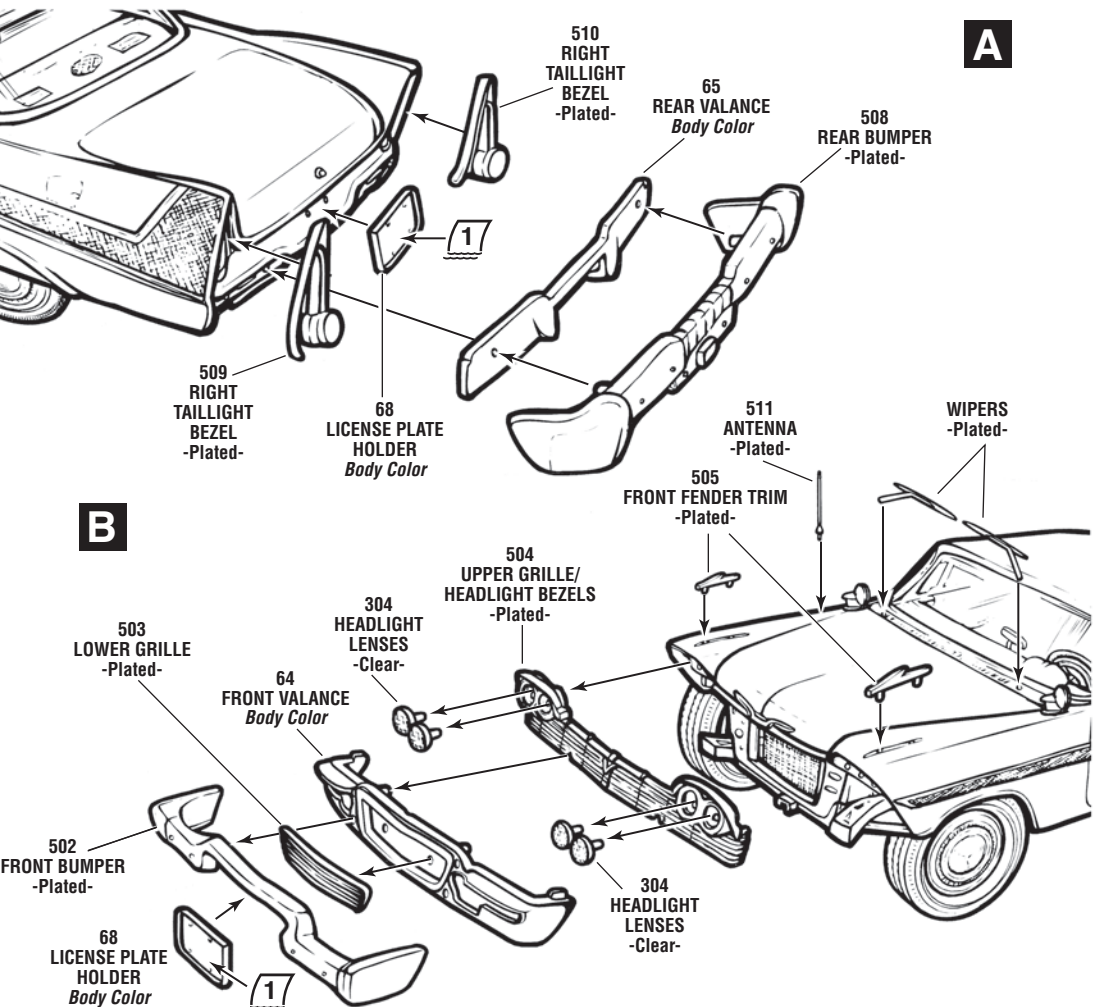


5 BODY

A



6 FINAL ASSEMBLY



CHRISTINE



amt

A801-200

IMPORTANT

Assembly: Carefully study and understand the entire instruction sheet. Compare the parts in the box to the instruction sheet to be sure you have received all the parts required. Carefully remove parts from trees. Before cementing, "TEST FIT" parts together to insure proper location and alignment. Scrape paint and plating from surfaces to be cemented. Subassemblies and components should be painted before any parts are attached. Use only cement and paint made for styrene plastic.

BUILDING TIPS FOR THE ADVANCED MODELER

For the best possible finish, your kit should be painted, even if molded in color. Paint should be applied evenly, in several thin coats rather than one heavy coat. The first coat should not completely cover the surface. Each layer should be allowed to thoroughly dry before the next is applied. Also, each coat should be "wet sanded", except for the final coat, using No.1200 wet or dry sandpaper which is slightly damp. Be careful not to remove any detail while sanding.

It is important to keep your hands clean when working with your model and wash parts thoroughly before painting to remove any mold release agent that may have been used during manufacture, body oil from your hands, sanding residue, and dust, which is naturally attracted to plastic by static electricity. Use a mild solution of dishwashing detergent and water. A tack rag should be used to dry the parts, DO NOT use paper towels or tissues, since they will leave lint on the part.

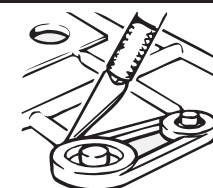
Parting lines and glue joints should be sanded or filed prior to painting and cementing. Because paint has a tendency to draw away from sharp edges, they should be lightly filed. Use filler putty designed for plastic to fill small gaps that may occur between parts and to blend contours. This should be done only after the first, or "primer," coat of paint is applied.

When painting a two-tone body, the lightest color should be painted first. Use frosted, or "magic," tape to mask off the area you do not want painted. After the second color is dry to the touch, the tape can be removed. Use a very fine brush to touch up edges if necessary. If decals are to be added, do so before adding any gloss coat. A gloss coat will help even out the edges between the two colors as well as set the decals.

RECOMMENDED TOOLS

HOBBY KNIFE

Use a sharp hobby knife to remove parts from the trees. The knife may also be used to remove parting lines and flash.



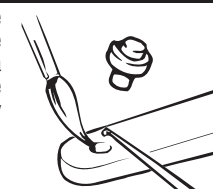
TWEEZERS

Use tweezers to hold small parts during assembly, painting and when applying cement.



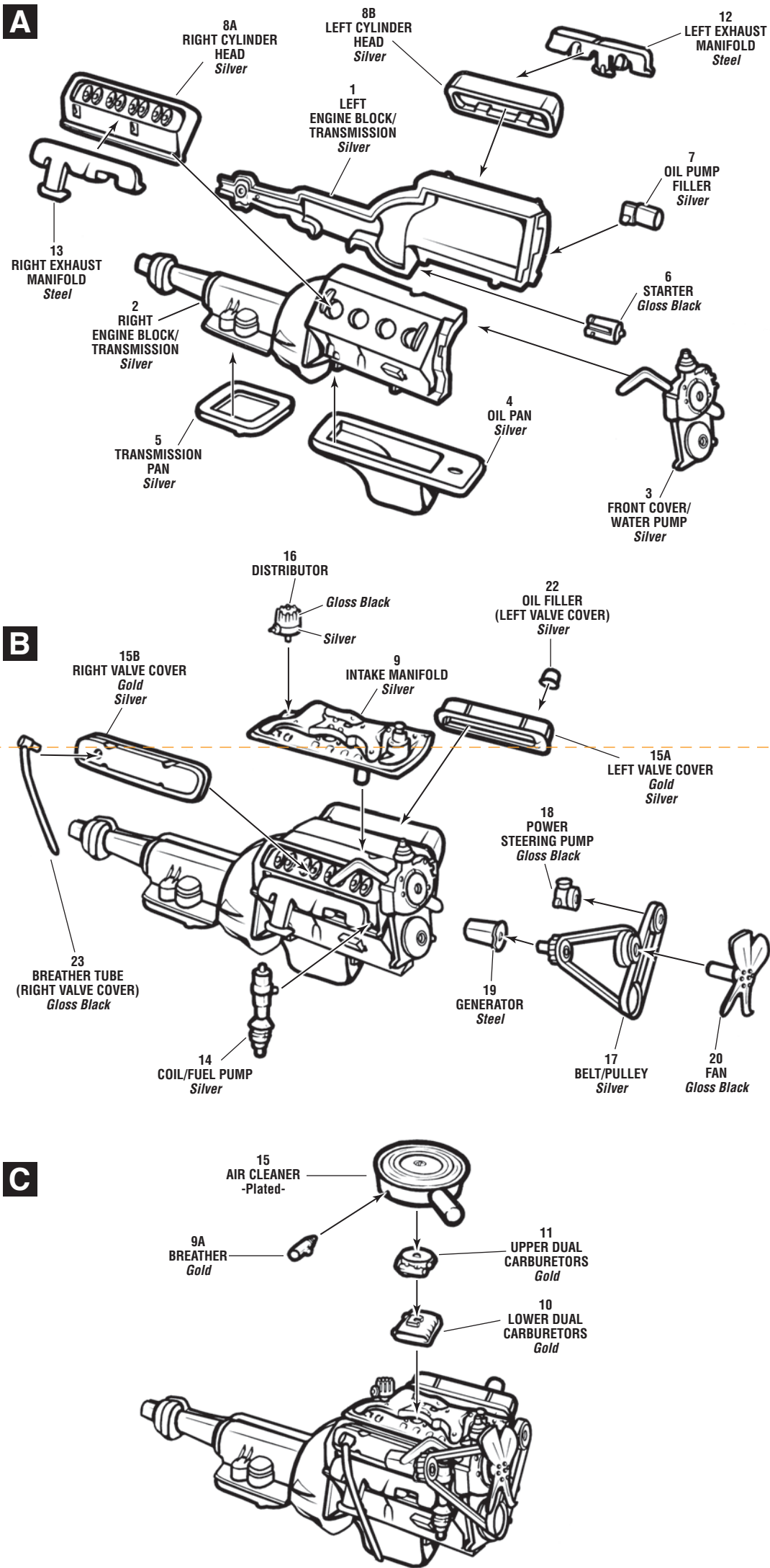
BRUSH

We recommend the use of liquid polystyrene cement. Apply with a fine brush. Use sparingly or a sloppy job will result.

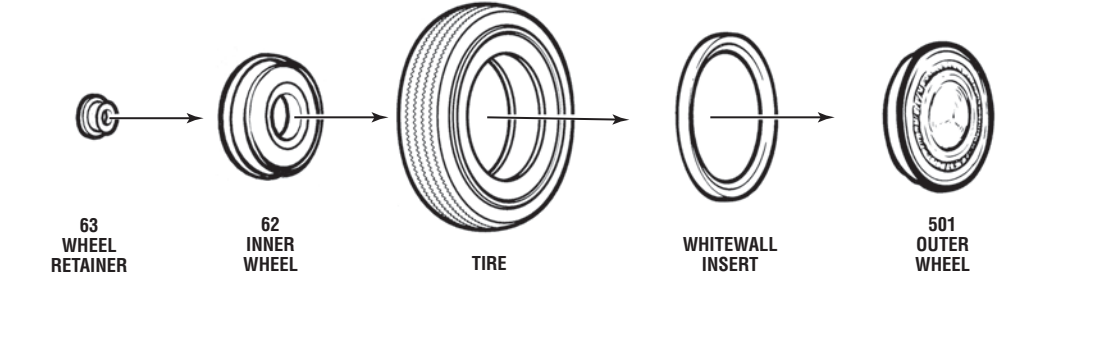


- | | | |
|-------------------------------|-------------------------------|------------------------|
| 1 Assembly sequence | ⚙ Completed assembly | 7 Part number |
| ↔ Both sides | ↻ Other side | 1 Apply decal |
| ⊗ Repeat several times | ■ Trim off shaded area | ⊘ Do not cement |

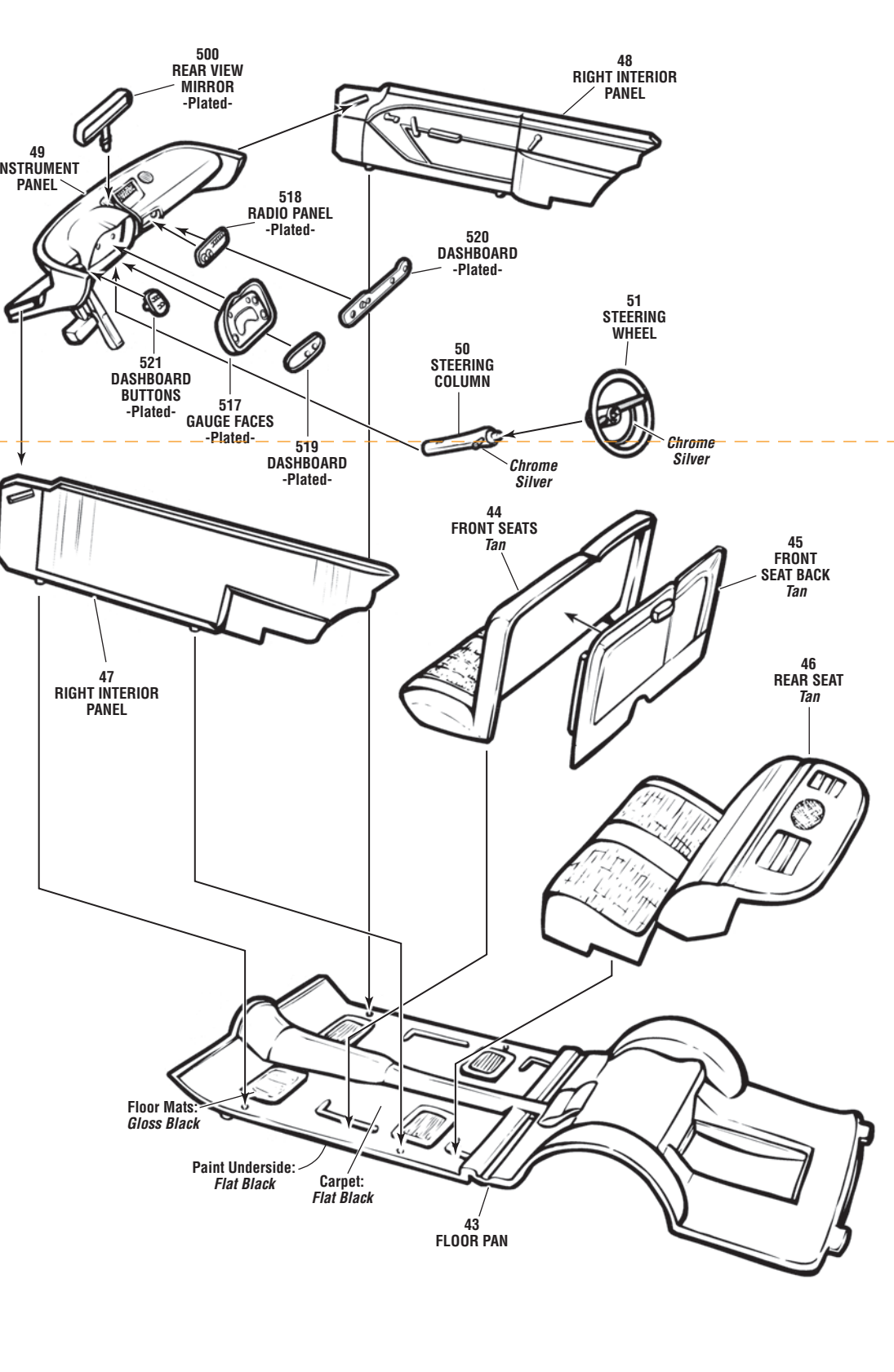
1 ENGINE ASSEMBLY



2 TIRE & WHEEL ASSEMBLY Assemble 4 as Shown



3 INTERIOR ASSEMBLY



4 CHASSIS ASSEMBLY

